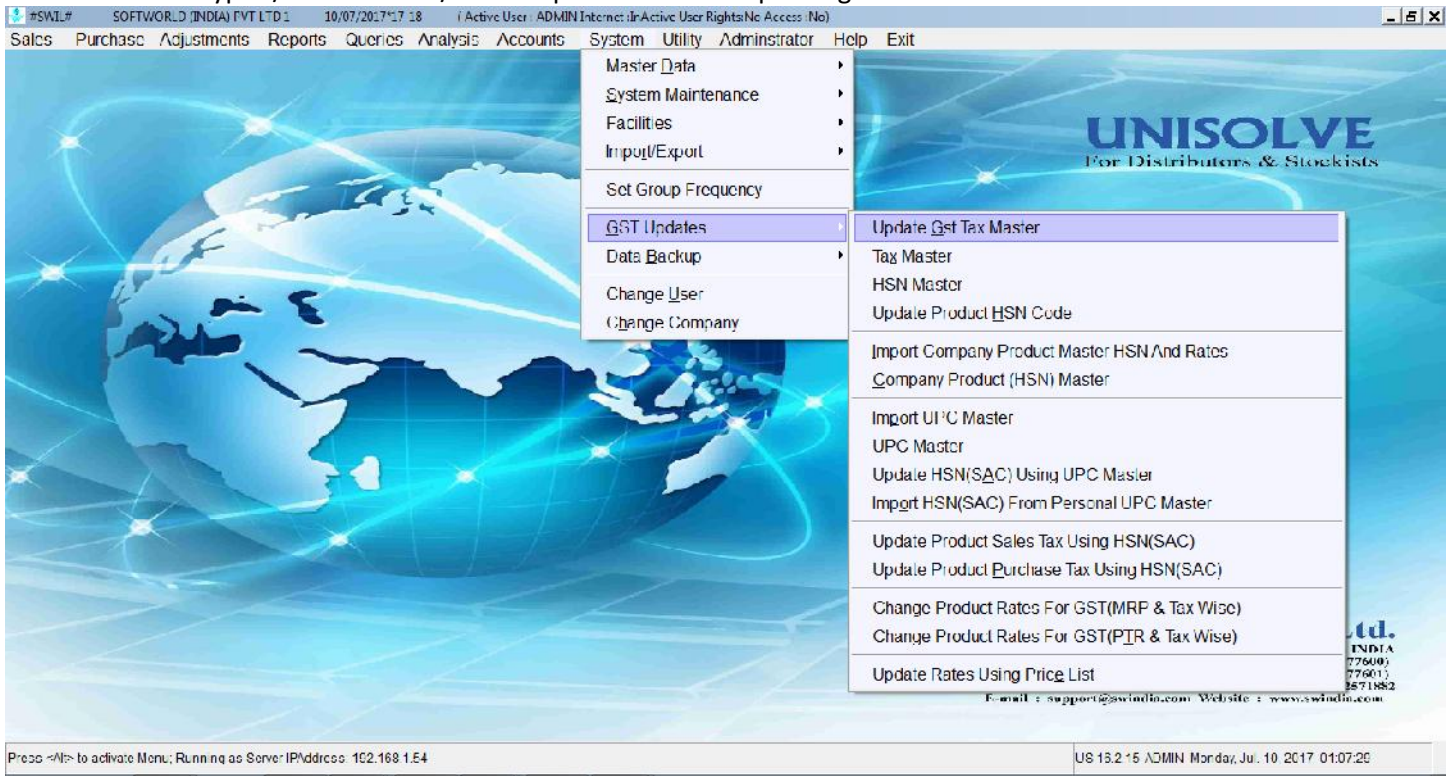


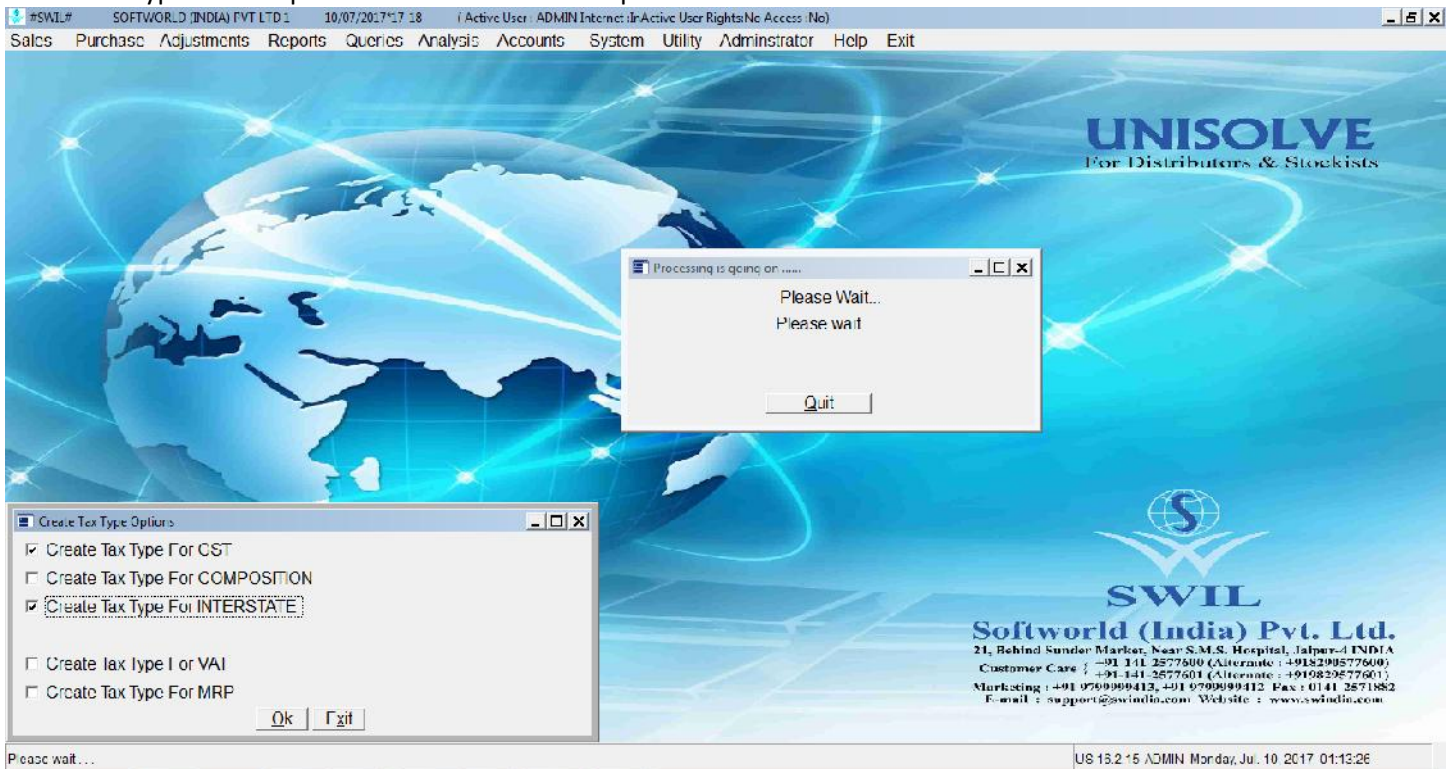


1. **GST Updates** → **Update GST Tax Master**

This option auto Creates
GST Tax Types / HSN Master / Default print formats for printing GST Transactions.



Please select Tax type, you want to create as per your Business.
Create Tax Type for GST: - for GST Transactions within State
Create Tax Type for Inter State: - for Interstate GST Transactions
Create Tax type for Composition: - If You are in Composition



For Auto Selecting IGST Tax type while sale pl follow following
 Check Tax type Master with codes SG0, SG1, SG2 SG3 SG4 and select IG of same rate in Tax type of InterState Transactions, as mentioned below.

Applicable For: Sales Purchase

Within State Tax type: GST Tax Rate: GST LOW1

Inter State Tax type: Tax Rate:

Tax Type For VAT: Tax Code: SG1 Description: GST 5.00%

Posting A/c: Sale/Purchase: SALES OF 5.00% TAXABLE GOODS (GST) Returns: SALES RETURN-NOT IN TAX PERIOD

Breakage: BREAKAGE CLAIMS ALLOWED Expiry: EXPIRY CLAIMS ALLOWED

Commodity: Schedule No.: Schedule SR No.:

I.C.Rate	% Rate	Description	Posting A/c	Tax Type	Schedule No.	Description	Tax Type for VAT	Schedule SR No.
	0.00000	DISCOUNT		IG0		EXEMPTED(I)	<input type="checkbox"/>	
	2.50000	SGST	SGST OUTPUT	IG1		IGST 5.00	<input type="checkbox"/>	
	2.50000	CGST	CGST OUTPUT	IG2		IGST 12.00	<input type="checkbox"/>	
	0.00000	Add.Surcharge	DISCOUNT	IG3		IGST 18.00	<input type="checkbox"/>	
				IG4		IGST 28.00	<input type="checkbox"/>	

If Tax is Applicable on Net Rate, Charge Free Qty, Tax on Gross Value

Rate Inclusive in Tax(Retail) InActive

Reduce Billing Rate By: 0 Form: Tax For InterState Transaction: IG

Reduce Discount in Sales By: 0.0000 of MRP Tax For Non Tin Party:

Reduce MRP for Inclusive Items for Calculation of Tax/IG (It on MRP) by %: 0.0000 Reduce for LT Extra Items Also

Promotional Rate to be charged on Free Goods when Tax is included in Sales Rates: 0.0000 % of MRP

Buttons: Add, Modify, Remove, View, Print, Exit, Find, Select

Footer: Press <Alt> to activate Menu; Running as Server IP Address: 192.168.1.54 US 13.2.15 ADMIN Monday, Jul. 10. 2017 01:36:16

Now if State in Company master and Customer Master is same then SG Tax types will apply in transactions and is state are different then IG tax types will auto apply., to enter State in Company Master and Master Data : - > Customer:- > Station Master is very important.

Company: SOFTWORLD (INDIA) PVT LTD 1 Alias: H0117

Address For Report: BHARAT DISTRIBUTORS

Admin. Password: ADMIN Confirm Password: ***** Books From: 01/04/17

User Password: USER Confirm Password: ***** Books Up to: 31/03/18

Data Dir: H0117 Sign. Authority:

Address1: SHOP NO. 6, D/WA BAZAR

Address2:

Station: JAIPUR Pin Code: 482001

State: Madhya Pradesh Country: INDIA

Phone1: 2222222 Telex:

Phone2: 3333333 Fax:

Phone(R): 4444444 Mobile: 9999999999

E-Mail: bharatdistributors@gmail.com

Tin: 12345678901 Tin Date: // /

CST No: CST Date: // /

LIC No.(1): LIC Date: // /

LIC No.(2): UDSA/C.No:

PAN NO: AIII P7895A Food Lic. No: FOOD456790

Service Tax Reg.No: ALLLP7895ASD002 CIN: 78954863215436

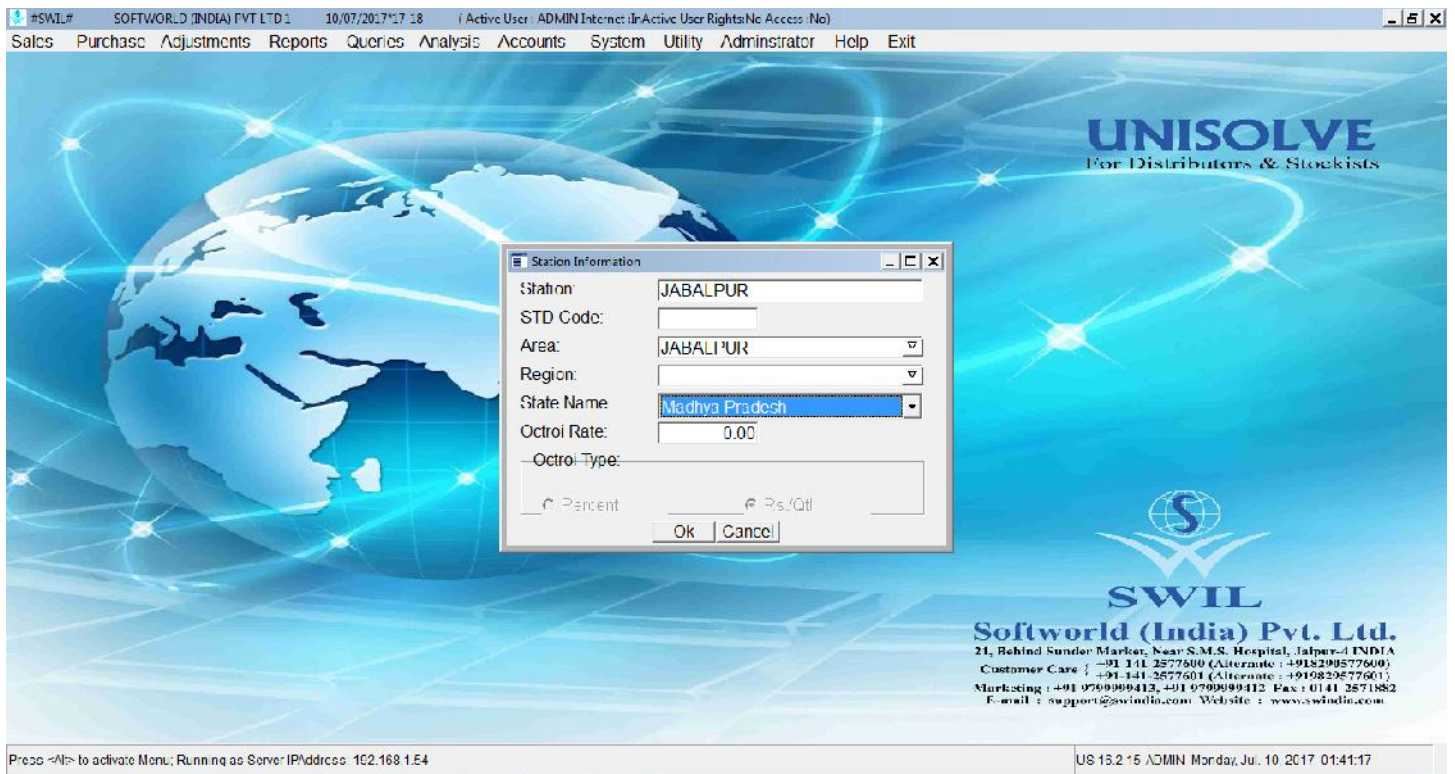
Server IP Address: 192.168.1.54 Server Port Number: 81

Local IP Address: 192.168.1.54

GST No: 25EALLLP7895A42 GST Date: // /

Buttons: Ok, Cancel

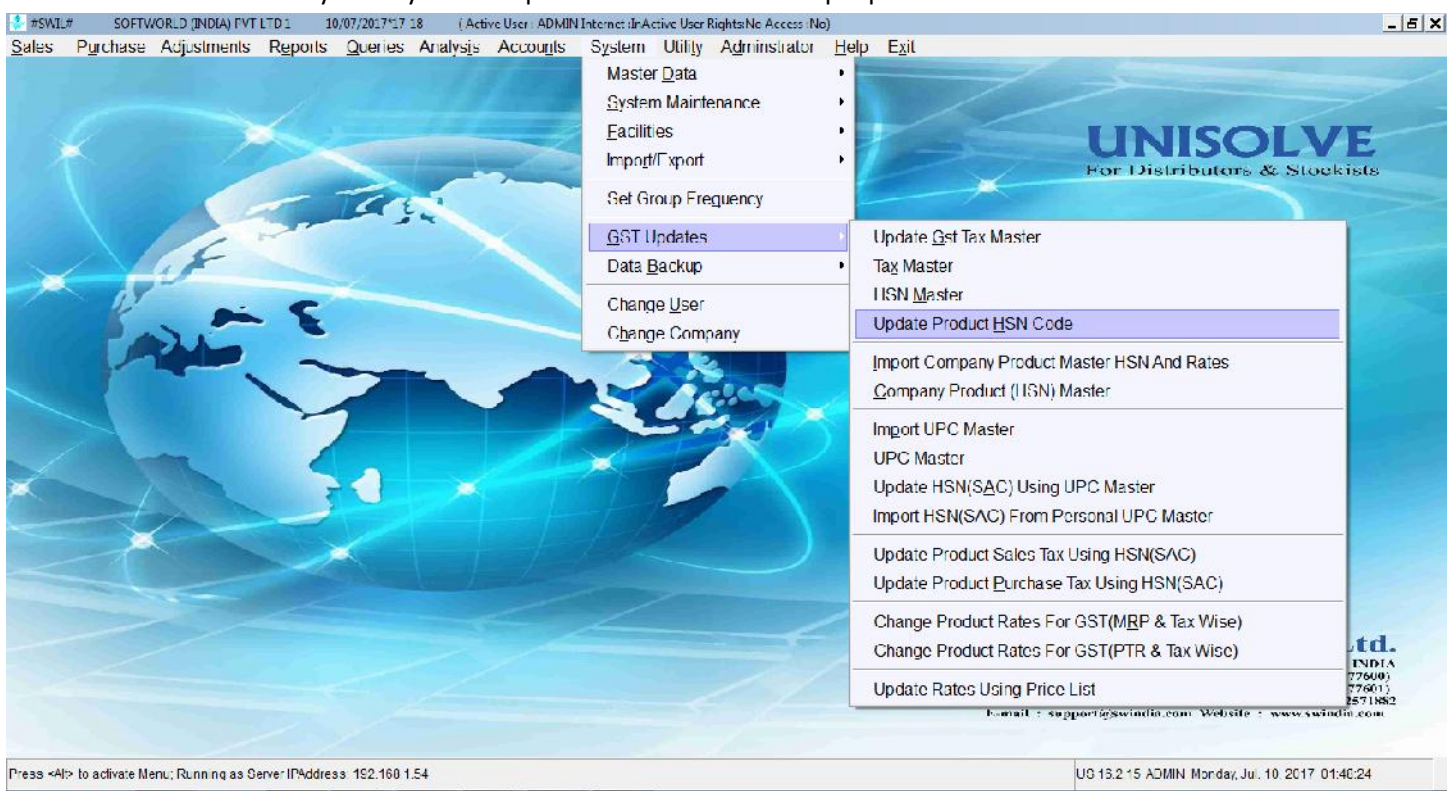
Footer: Closed Global Table US 13.2.15 Monday, Jul. 10. 2017 01:35:53



2. Update HSN Codes, we have provided Multiple options for updating HSN Code

a. GST Updates → Update Product HSN Codes

By this option You can Select Master Group, then Group, Then Category, Then product for updating HSN Codes in Selected Products manually one by one or update same HSN to Multiple products



SWIL# SOFTWORLD (INDIA) PVT LTD 10/07/2017 18:18 ADMIN Internet (Active User Rights: No Access: No)

Sales Purchase Adjustments Reports Queries Analysis Accounts System Utility Administrator Help Exit

Update Product HSN(SAC)

Master Group | Group | Attribute | Category | Product | Show Products

Product HSN(SAC) | Update HSN(SAC) To All

Code	Product Name	Packing	HSN(SAC)	HSN Code	Entry No	Tax Rate	Description
DAJSH GDF	FYIOPINIM 1GM INJ	20MI	3004	3004	00	GST00	Medicaments (excluding goods of heading 30.02, 30.05)
VGRED	JOYCLAV 1.2 GM INJ	VAIL	3004	3004	05	GST05	Medicaments (excluding goods of heading 30.02, 30.05)
NLKNL	TOOTH STAIN REMOVAL	1X1	3004	3004	12	GST12	Medicaments (excluding goods of heading 30.02, 30.05)
14526	ARTECON INJ 60MG	1 VAIL	3004	3004	18	GST18	Medicaments (excluding goods of heading 30.02, 30.05)
121IK	C-FORIN 1.5 GM	VAIL	3004	3004	12	GST12	Medicaments (excluding goods of heading 30.02, 30.05)
VCWEV	CLAREX + CREAM	1X15GM	3004	3004	18	GST18	Medicaments (excluding goods of heading 30.02, 30.05)
**47	COASTAT GYNAE	6T.	3004	3004	12	GST12	Medicaments (excluding goods of heading 30.02, 30.05)
***49	COASTAT PLUS TAB	1**0	3004	3004	12	GST12	Medicaments (excluding goods of heading 30.02, 30.05)
AH8	CONTH CAP	1**0	3004	3004	12	GST12	Medicaments (excluding goods of heading 30.02, 30.05)
AB9	DISOCAIN SUSP	175ML	GST12				
***36	DISOGEL SUSP	175ml	GST12				
**37	FLUCREME NM OINTMENT	10GM	GST12				
AH11	HEPACH SYRIJ	100MI	GST12				
DNKJL	IBUCON PLUS 400 TAB	1X10	GST12				
**38	IBUCON PLUS SUSP	60ML	GST12				
VNSLVN	IBUCONE 200 PLUS TAB	1**0	GST12				

Add | Modify | Remove | View | Print | Exit | Find | Select

Note: Use Menu Option (System->GST Updates) to Update Tax in Product Master

Update HSN(SAC) | Exit

SWIL world (India) Pvt. Ltd.
 Sunder Marbar, Near S.M.S. Hospital, Jalpur - INDIA
 Care : +91 11 2577500 (Alternate : +91 290577600)
 : +91 979999412, +91 979999412 Fax : 0141 2571882
 support@swilindia.com Website : www.swilindia.com

Press <Alt> to activate Menu; Running as Server IP Address: 102.168.1.54 US 13.2.15 ADMIN Monday, Jul. 10. 2017 01:50:46

b. GST Updates → Import Company Product Master HSN & Rates

If you are getting Excel files from Companies with updated HSN Codes and Rates then that can be imported as follows:

SWIL# SOFTWORLD (INDIA) PVT LTD 10/07/2017 18:18 ADMIN Internet (Active User Rights: No Access: No)

Sales Purchase Adjustments Reports Queries Analysis Accounts System Utility Administrator Help Exit

Master Data

System Maintenance

Facilities

Input/Export

Set Group Frequency

GST Updates

Data Backup

Change User

Change Company

Update GST Tax Master

Tax Master

HSN Master

Update Product HSN Code

Import Company Product Master HSN/And Rates

Company Product (HSN) Master

Import UPC Master

UPC Master

Update HSN(SAC) Using UPC Master

Import HSN(SAC) From Personal UPC Master

Update Product Sales Tax Using HSN(SAC)

Update Product Purchase Tax Using HSN(SAC)

Change Product Rates For GST(MRP & Tax Wise)

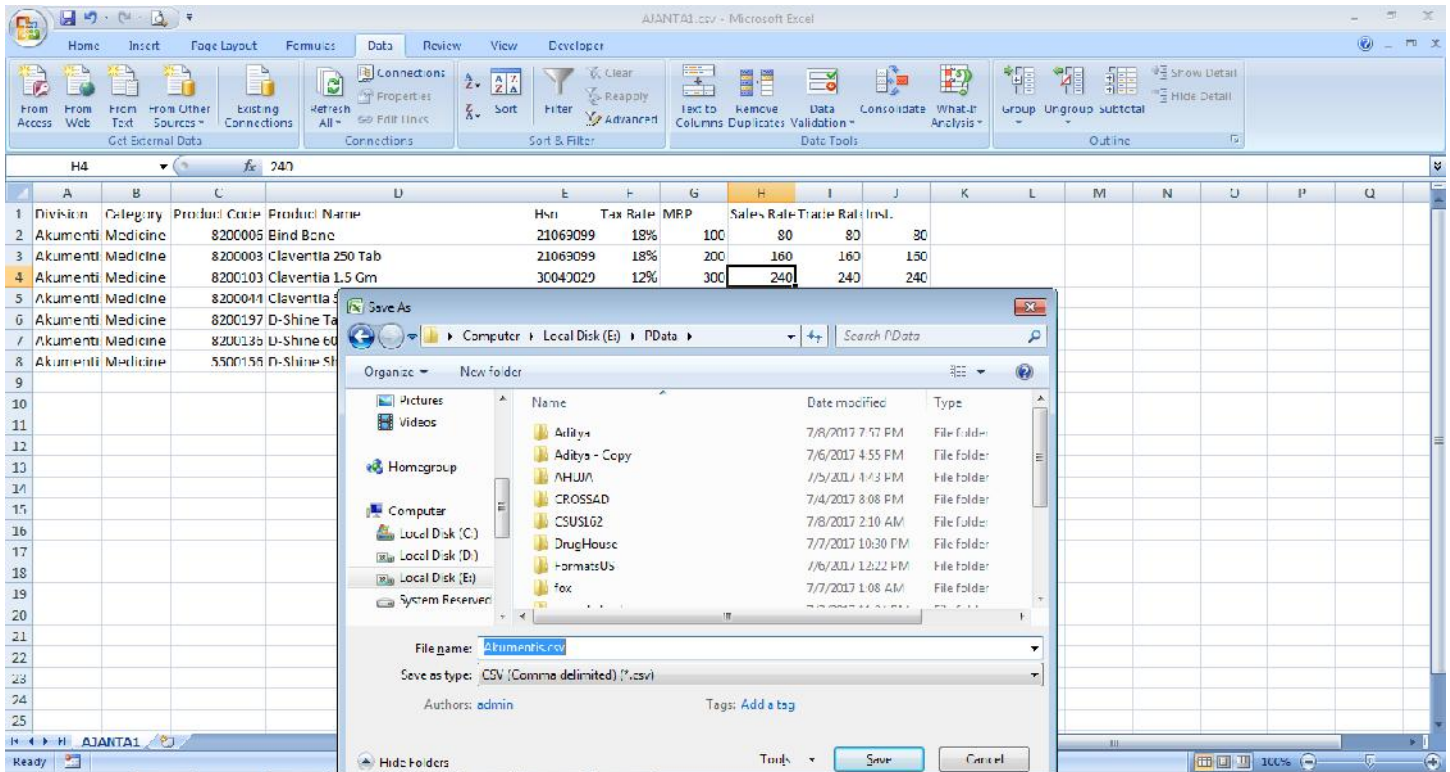
Change Product Rates For GST(PIR & Tax Wise)

Update Rates Using Price List

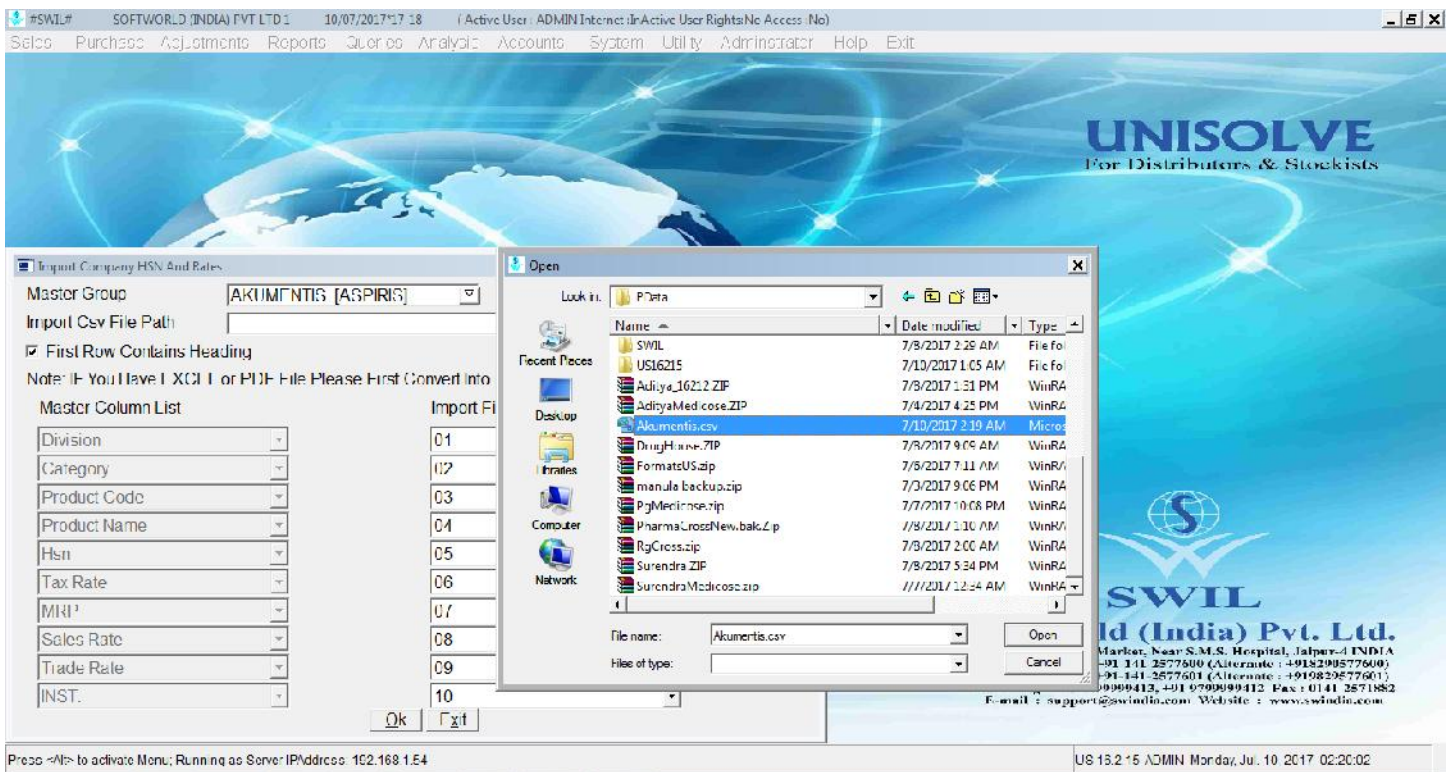
SWIL world (India) Pvt. Ltd.
 Sunder Marbar, Near S.M.S. Hospital, Jalpur - INDIA
 Care : +91 11 2577500 (Alternate : +91 290577600)
 : +91 979999412, +91 979999412 Fax : 0141 2571882
 support@swilindia.com Website : www.swilindia.com

Press <Alt> to activate Menu; Running as Server IP Address: 102.168.1.54 US 13.2.15 ADMIN Monday, Jul. 10. 2017 02:17:41

Save as or convert PDF or Excel Files to CSV



Select CSV File in Above Option Update Company Product Master and HSN Rates



Map Mentioned Columns with CSV Selected

UNISOLVE
For Distributors & Stockists

SWIL
Softworld (India) Pvt. Ltd.
21, Behind Sunder Market, Near S.M.S. Hospital, Jalpaiguri INDIA
Customer Care : +91 141 2577600 (Alternate : +918299577600)
Marketing : +91 9799994112, +91 9799994112 Fax : 0141 2571882
E-mail : support@swilindia.com Website : www.swilindia.com

Import Company HSN And Rates

Master Group: AKTIMENTIS [ASPIRIS]

Input Csv File Path: E:\PData\Akumentis.csv

First Row Contains Heading

Note: If You Have EXCEL or PDF File Please First Convert into CSV File

Master Column List	Import File Columns
Division	Division
Category	Category
Product Code	Product Code
Product Name	Product Name
Hsn	Hsn
Tax Rate	Tax Rate
MIRI	MIRI
Sales Rate	Sales Rate
Trade Rate	Trade Rate
INST.	Inst.

Press <Alt> to activate Menu; Running as Server IPAddress: 162.168.1.14

US 15.2.15 ADMIN Monday, Jul. 10 2017 02:21:34

Items in CSV comes Auto have to Map Item in Current data accordingly, as we do while purchase CSV import for 1st time, and press "OK"

UNISOLVE
For Distributors & Stockists

SWIL
Softworld (India) Pvt. Ltd.
21, Behind Sunder Market, Near S.M.S. Hospital, Jalpaiguri INDIA
Customer Care : +91 141 2577600 (Alternate : +918299577600)
Marketing : +91 9799994112, +91 9799994112 Fax : 0141 2571882
E-mail : support@swilindia.com Website : www.swilindia.com

SPECIFY THE CORRECT CODES TO MERGE THEM

Pd.Code	Pd.Name	HSN(SAC)	Pd.Code	Pd.Name	Pd.Packing
8200008	Bind Bone	21069099	F*85	BIND BONE	1*10
8200003	Claventia 250 Tab	21069099	74856	CLAVENTIA 250 TAB	1*10
8200103	Claventia 1.5 Gm	30049029	***362	CLAVENTIA 1.5 GM	1.5GM
8200044	Claventia 500 mg Tab	30049009	1365.12	CLAVENTIA 500 TAB	1*10
8200197	D-Shine Tab	30049069	*9*54	D-SHINE TAB	1*30
8200136	D-Shine 60K Tab	30049069	36*****6*	D-SHINE 60K TAB	1*4
5500158	D-Shine Shot Inj	30049099		d-s_	
				Product Name	Prod.Code
				D-SHINE TAB	*9*54
				D-SHINE 60K TAB	36*****6*
				D-SHINE SHOT	//
				D-SHINE SPRAY 100001	9685
				D-SHINE SPRAY 20001	7412
					Packing
					1X5ML
					1X5ML

Add Modify Remove View Print Exit

Please wait...

US 15.2.15 ADMIN Monday, Jul. 10 2017 02:23:43

PI check HSN Code of selected Tax and PD Cd(Company) code is updated auto

Product Information

Group: AKUMENTIS [ASPIRIS] Category: []

Product Name: BIND BONE Code: F*65 HSN(SAC): 2106909918

Packing: STRIP Contains: 10000*10 Box Size: 1

Case Lot: 0 Print Order: 2 Shelf ID: [] Weight(Kg/Lt): 0.000

Sales Tax: SV1_1 Purchase Tax: PG2 Purch. Disc: 0.00 Local Tax: inclusive

Barcode: [] Disc Adj(+/-): 0.00 Min. Stock: 0 Max Stock: 0

UPC: [] Discontinue Date: [] MSR: 0.0000 Pd Cd(Company): 12100006

Generic Name: [] Schedule: [] Octroi Per Unit: 0.0000

BATCH NO. WISE OPENING STOCK

Batch No.	Qty	Free Qty	TotCur.Qty	ExpDt	MRP	Trade Rate	Sale Rate
04	0	0.0000	0	01/17	139.00	106.90	106.90
05	0	0.0000	0	05/17	139.00	106.90	106.90
08	0	0.0000	0	05/17	139.00	106.90	106.90
09	0	0.0000	0	05/17	139.00	106.90	106.90
29	0	0.0000	0	05/19	152.85	116.46	116.46
30	0	0.0000	0	05/19	152.85	116.46	116.46
522	0	0.0000	0	01/19	152.85	116.46	116.46
523	0	0.0000	0	02/19	152.85	116.46	116.46
535	0	0.0000	56	10/19	152.85	116.46	116.46
Total ->	27	-1	0.000	61			

INST. Rate: 106.90 Sales Tax: SV1_1 Purchase Tax: PG2 Mfg. Code: *1

Net Rate: 95.31 TPR: 0.00 Excise Duty: 0.0000 Barcode: 999000011335

Stock Date: 04/03/15

Buttons: Ok, Cancel, Add, Modify, Remove, Find

Simultaneously CSV is updated in below "GST Update :-> Company Product HSN Master

System Utility Administrator Help Exit

- Master Data
- System Maintenance
- Facilities
- Input/Export
- Set Group Frequency
- GST Updates**
 - Update GST Tax Master
 - Tax Master
 - HSN Master
 - Update Product HSN Code
 - Import Company Product Master HSN/And Rates
 - Company Product (HSN) Master**
 - Import UIC Master
 - UPC Master
 - Update HSN(SAC) Using UPC Master
 - Import HSN(SAC) From Personal UPC Master
 - Update Product Sales Tax Using HSN(SAC)
 - Update Product Purchase Tax Using HSN(SAC)
 - Change Product Rates For GST(MRP & Tax Wise)
 - Change Product Rates For GST(PUR & Tax Wise)
 - Update Rates Using Price List
- Data Backup
- Change User
- Change Company

UNISOLVE For Distributors & Stockists

td. INDIA 77609 77601 8571882

Email: support@swindia.com Website: www.swindia.com

SWIL# SOFTWORLD (INDIA) PVT LTD 10/07/2017 17:18 Active User: ADMIN Internet: In Active User Rights: No Access: No

Sales Purchase Adjustments Reports Queries Analysis Accounts System Utility Administrator Help Exit

Company HSN Information

Master Group	Group	Division	Company Product	Product Name	Mapped Product	Category	Category
*1		Akumentis (Aspiris)	5500156	D-Shine Shot In	A//		Medicir
*1		Akumentis (Aspiris)	8200003	Claventia 250 Tab	74856		Medicir
*1		Akumentis (Aspiris)	8200008	Bind Bone	F*85		Medicir
*1		Akumentis (Aspiris)	8200044	Claventia 500 mg Tab	1365.12		Medicir
*1		Akumentis (Aspiris)	8200103	Claventia 1.5 Gm	xxxx362		Medicir
*1		Akumentis (Aspiris)	8200136	D-Shine 60K Tab	36*****6*		Medicir
*1		Akumentis (Aspiris)	8200197	D-Shine Tab	*9*54		Medicir

Add Modify Remove View Print Exit Find

Press <Alt> to activate Menu; Running as Server IP Address: 102.168.1.54 US 13.2.15 ADMIN Monday, Jul. 10 2017 02:35:26

c. GST Updates → Update HSN using UPC Master

If you don't know Product wise HSN Codes then this option can be helpful, by using this Click on "Import UPC Master" option first, by this list of most commonly used products with HSN Codes and Tax rates will be updated in data in "UPC Master" Tab

SWIL# SOFTWORLD (INDIA) PVT LTD 10/07/2017 17:18 Active User: ADMIN Internet: In Active User Rights: No Access: No

Sales Purchase Adjustments Reports Queries Analysis Accounts System Utility Administrator Help Exit

UPC List

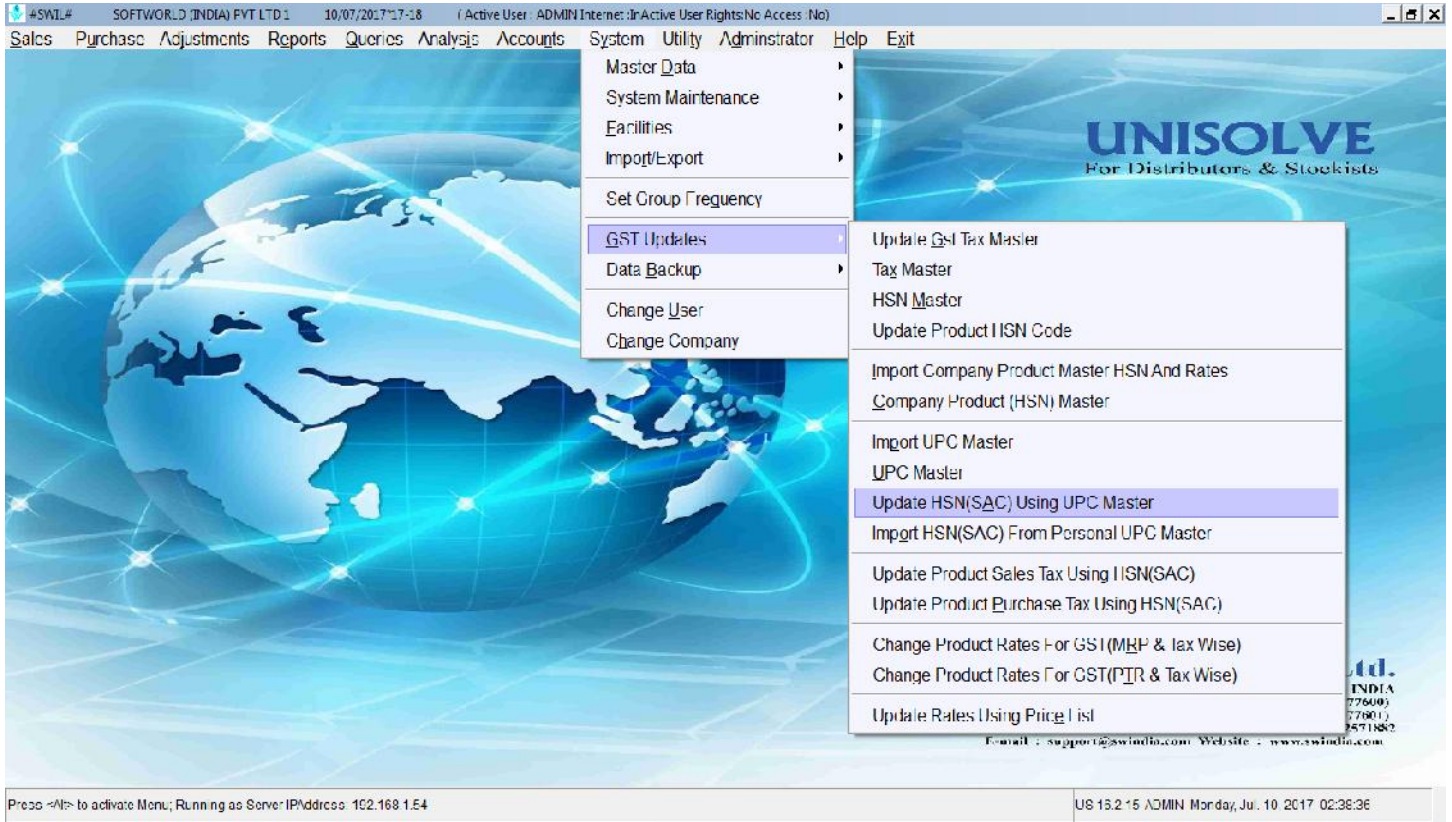
SKU	MFGNAME	UPC
BITATEL 40 MG TABLET 10	4 CARE LIFESCENCE PVT ...	4CLBITATTB004000
BITATEL 80 MG TABLET 10	4 CARE LIFESCENCE PVT ...	4CLBITATTB008000
BITATELAM TABLET 10	4 CARE LIFESCENCE PVT ...	4CLBITATTBXXXX01
CARRYL MR 30 MG TABLET ...	4 CARE LIFESCENCE PVT ...	4CLCARRYTB003000
CARRYL M SR 30 MG TABLE...	4 CARE LIFESCENCE PVT ...	4CLCARRYTB003001
CARRYL M FORTE 30 MG TA...	4 CARE LIFESCENCE PVT ...	4CLCARRYTB003002
CARRYL MR 60 MG TABLET ...	4 CARE LIFESCENCE PVT ...	4CLCARRYTB006000
CARRYL M SR 60 MG TABLE...	4 CARE LIFESCENCE PVT ...	4CLCARRYTB006001
CARRYL M FORTE 60 MG TA...	4 CARE LIFESCENCE PVT ...	4CLCARRYTB006002
CHOCARE 200 MG TABLET 10	4 CARE LIFESCENCE PVT ...	4CLCHOCARE002000
CORE 309 MG CAPSULE 10	4 CARE LIFESCENCE PVT ...	4CLCOREXCP033900
CREOLIP 5 MG TABLET 10	4 CARE LIFESCENCE PVT ...	4CLCREOLTB000500
CREOLIP 10 MG TABLET 10	4 CARE LIFESCENCE PVT ...	4CLCREOLTB001000
CREOLIP 20 MG TABLET 10	4 CARE LIFESCENCE PVT ...	4CLCREOLTB002000
CREOLIP F TABLET 10	4 CARE LIFESCENCE PVT ...	4CLCREOLTBXXXX00
ENZYCARE 5 MG TABLET 10	4 CARE LIFESCENCE PVT ...	4CLENZYCTB000500
ENZYCARE 10 MG TABLET 10	4 CARE LIFESCENCE PVT ...	4CLENZYCTB001000
ENZYCARE PLUS 10 MG TA...	4 CARE LIFESCENCE PVT ...	4CLENZYCTB001001
ENZYCARE LC TABLET 10	4 CARE LIFESCENCE PVT ...	4CLENZYCTBXXXX00

Print Exit Find

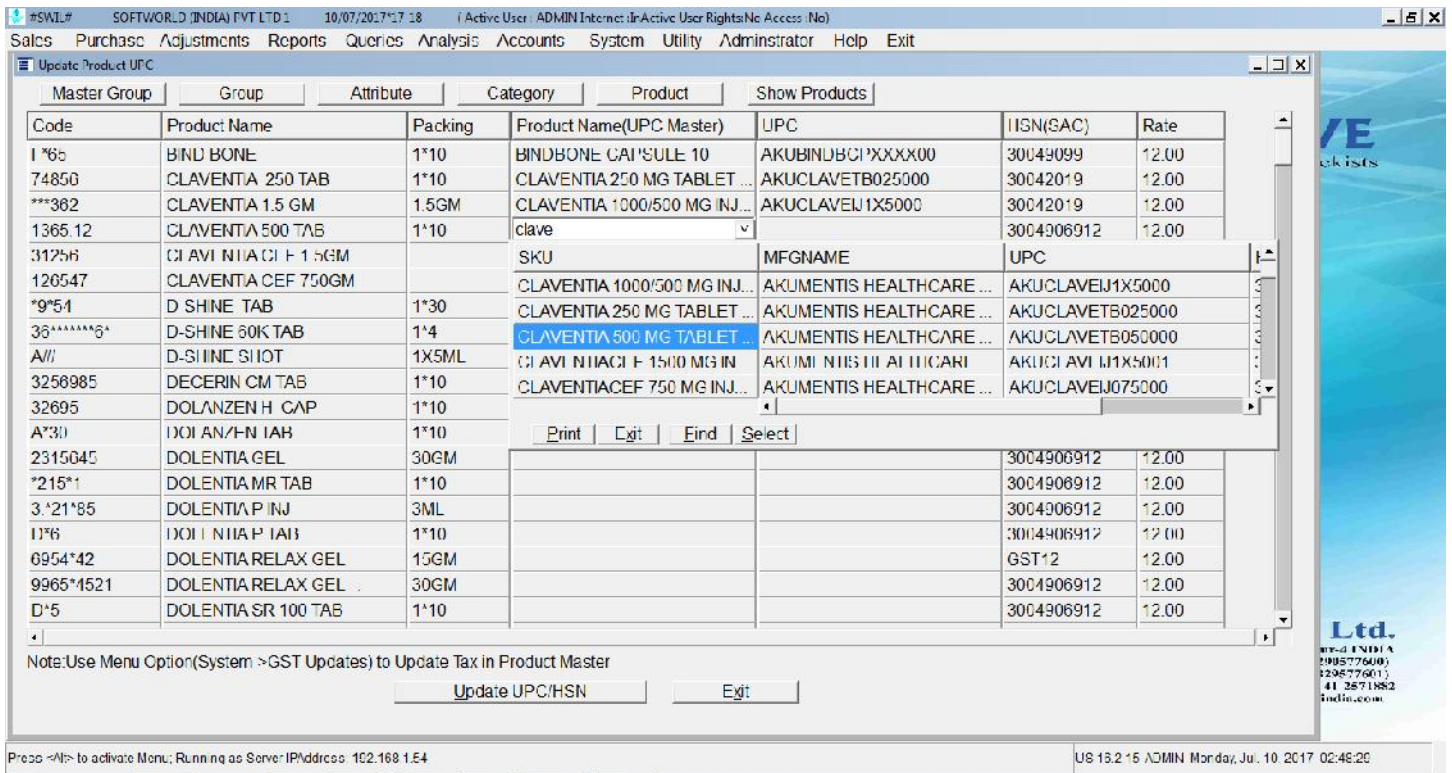
SWIL
World (India) Pvt. Ltd.
Market, Near S.M.S. Hospital, Jalpur, INDIA
+91 141 2577500 (Alternate : +913299577500)
+91 141 2577501 (Alternate : +913299577501)
99999412, +91 9799999412 Fax : 0141 2571882
www.support@swilindia.com Website : www.swilindia.com

Press <Alt> to activate Menu; Running as Server IP Address: 102.168.1.54 US 13.2.15 ADMIN Monday, Jul. 10 2017 02:43:07

After This Click on Update HSN using UPC Master

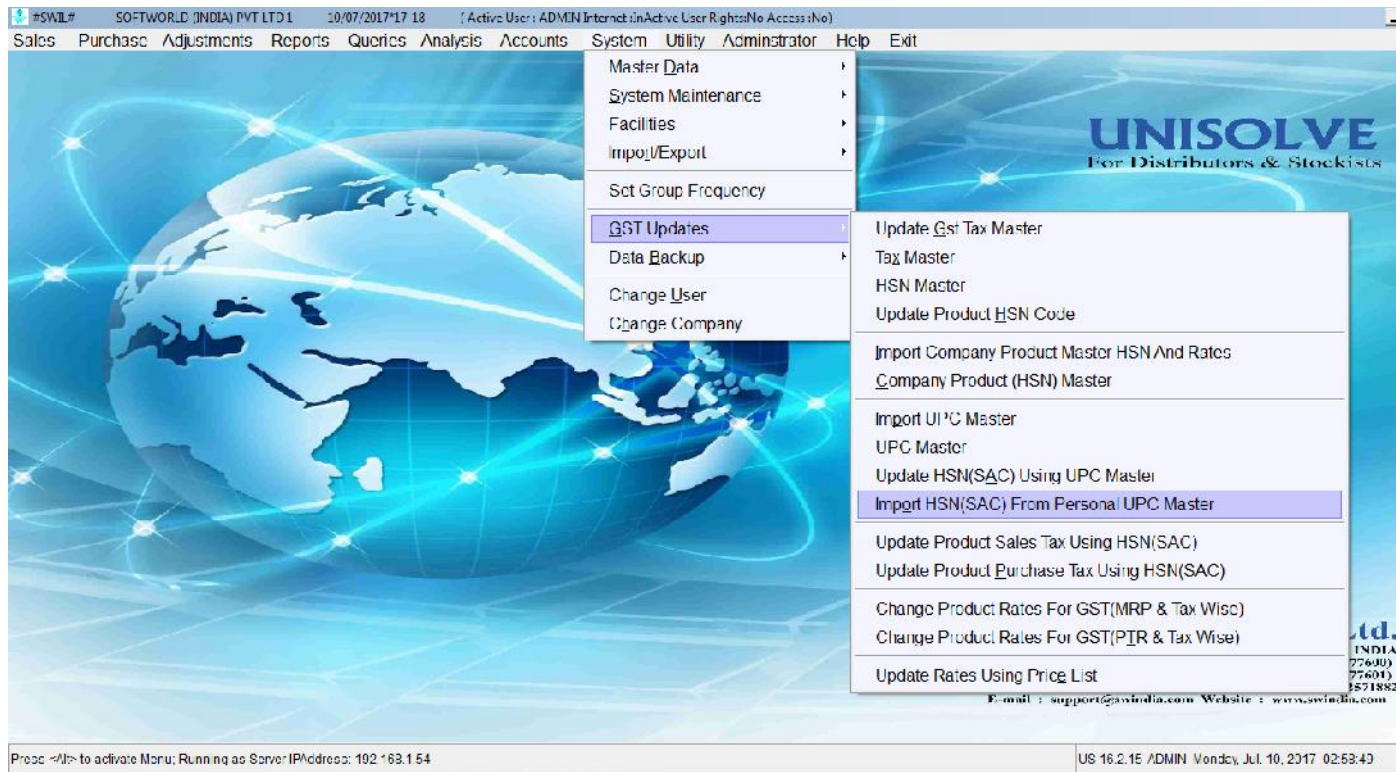


Clicking on above option again will open new window for mapping products in your data and UPC Master List, simply match the names and Click "Update HSN". You are ready with HSN updated.

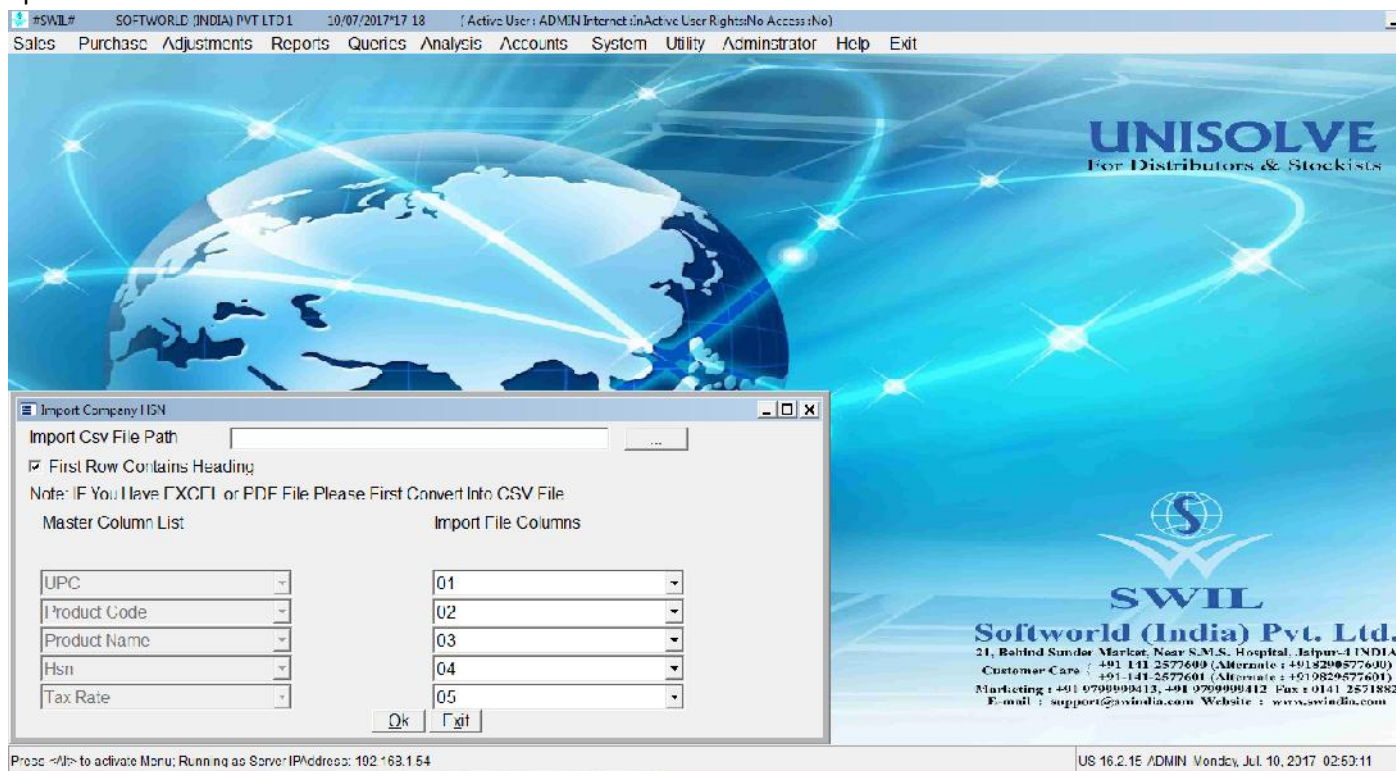


d. GST Updates → Import HSN from Personal UPC Master

If you are providing Data to AWACS, then AWACS is providing already mapped data in Excel, you may get the same on AWACS Website or contact AWACS Executive.



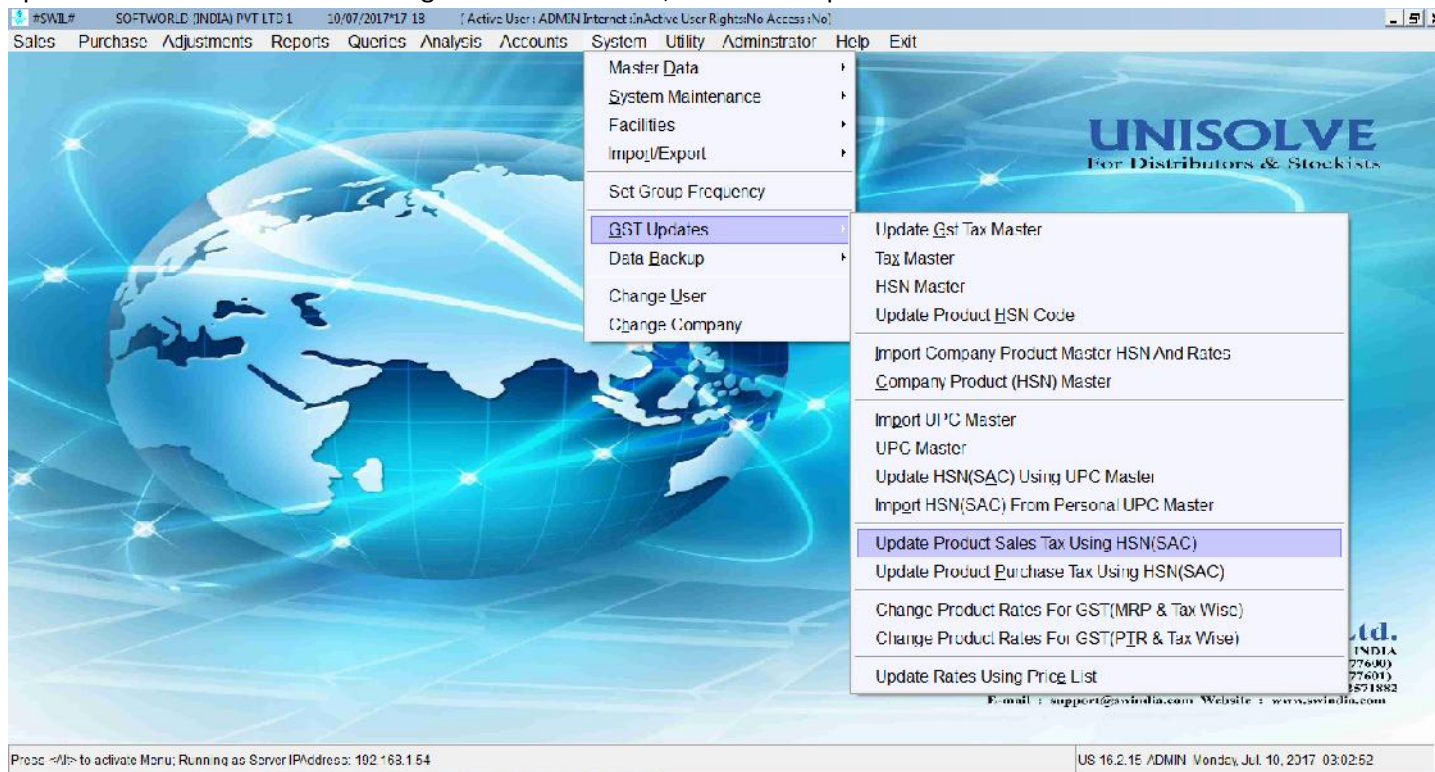
In this option again have to save Excel in CSV, match columns and click "OK", You are ready with HSN Codes Updated.



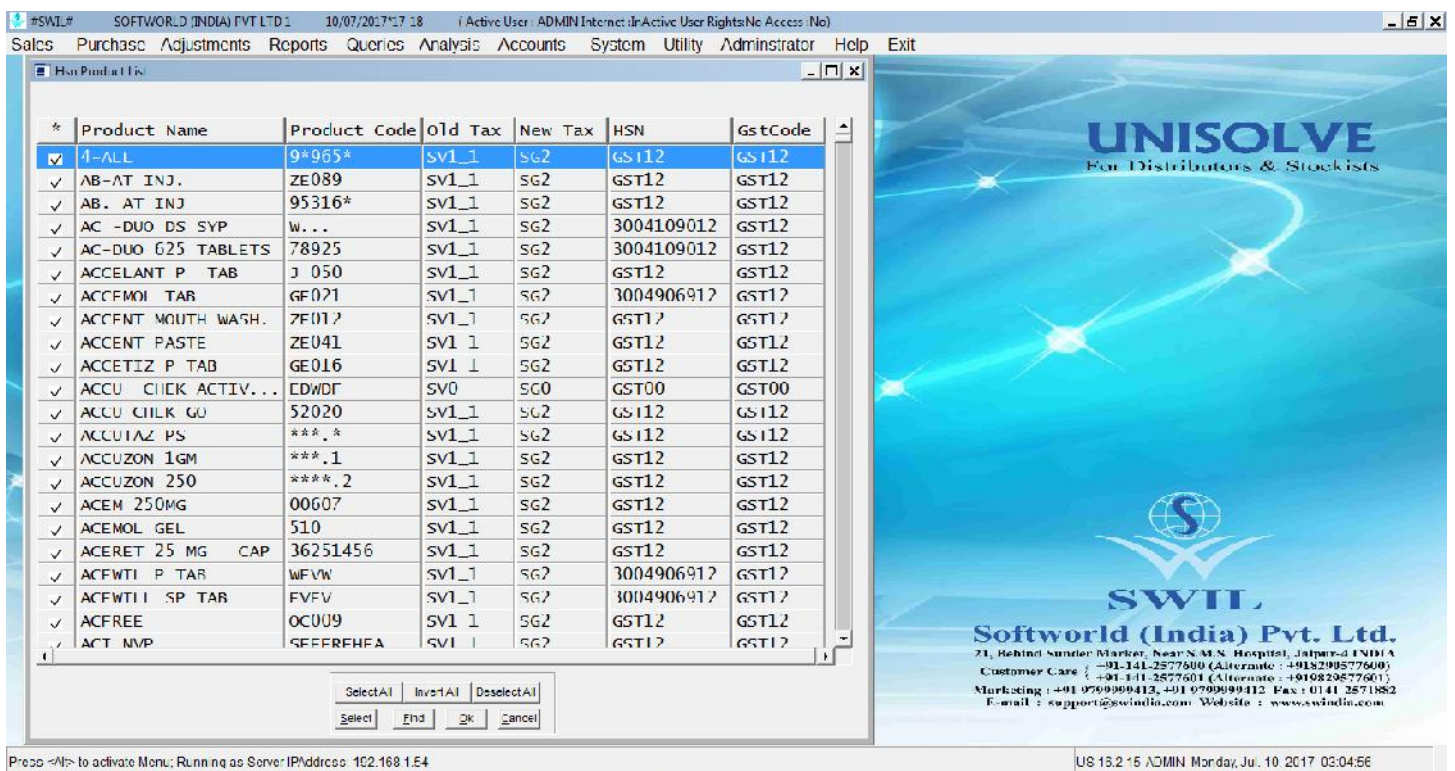
3. GST Updates → Update Product Sales Tax using HSN

Once you are done with updating HSN Codes with any of method mentioned above, then next step is to Update Sales Tax and Purchase Tax.

Update Sales Tax first to Start Billing with Current Stock, It will ask "Update tax in Batch?" Click "Yes".

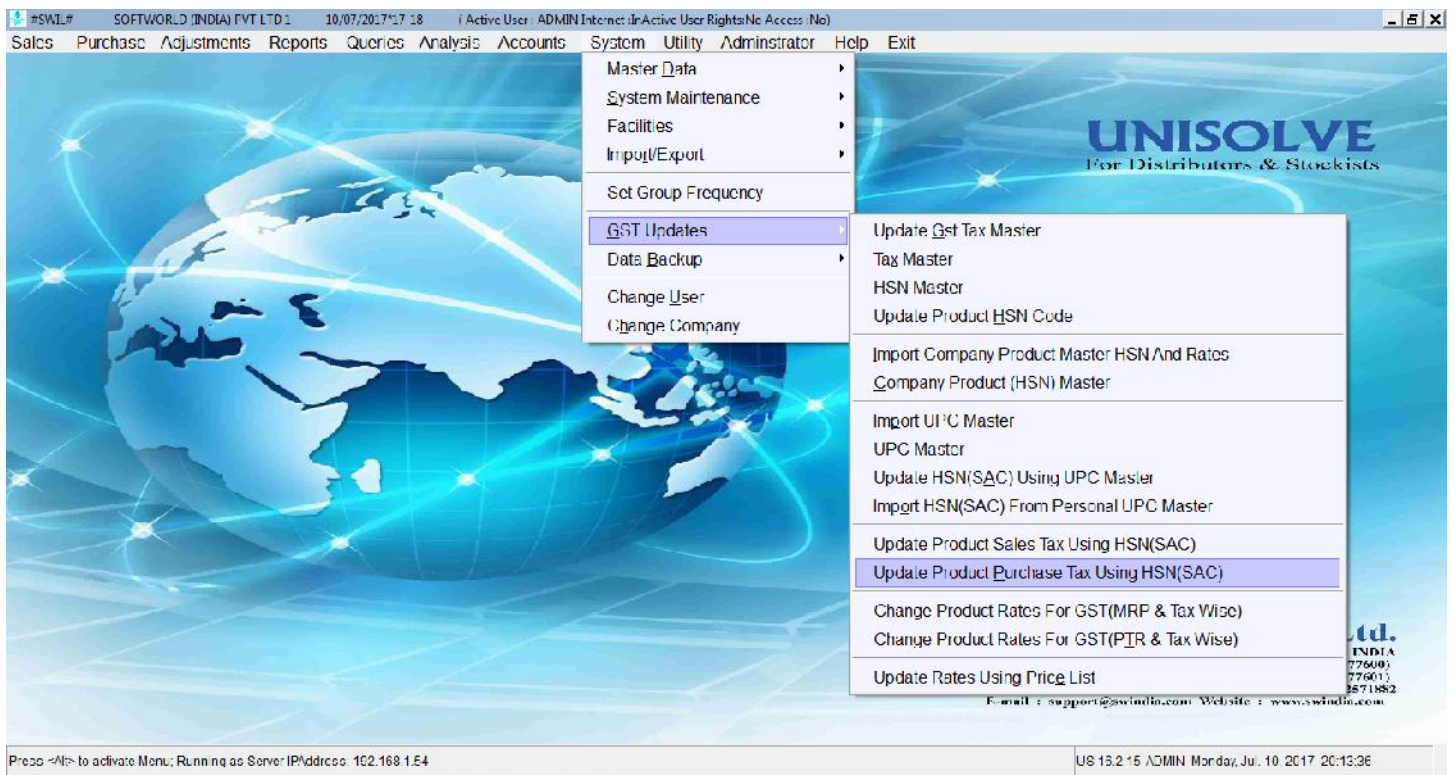


Will Show Product and Batch List, Click "Select All ""OK"", if you want to change for all products.

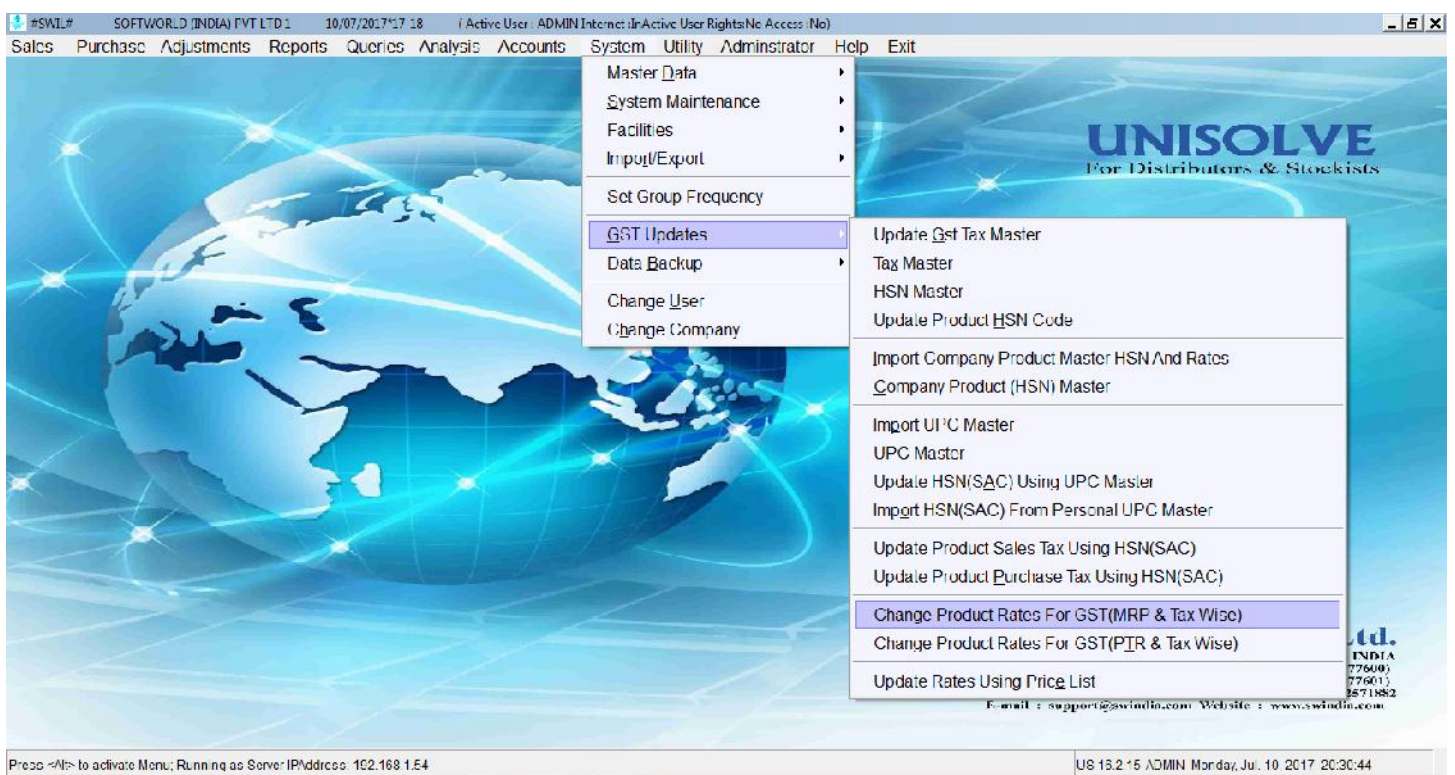


4. GST Updates → Update Product Purchase Tax using HSN

Once Purchase of VAT system is completed, then update Purchase tax also for entering new purchase of GST System. By Clicking will again ask “Do you want to Update Batch?” Click “Yes”, and then select all “OK” on list. You are ready with Purchase tax updated according to HSN selected.



5. (a) GST Updates → Change Product Rates for GST (Multiple Taxtypes)



Once the Sales Tax type is updated in Product and batch then only this option can be used.

Rates will be changed for selected tax types only, you can Select Group List and Check “Yes” if want to change rates for Batch Stock > zero only.

By this option you can change Sales Rate on the basis of Sale Rate as well as MRP, as shown below.

If you have changed Sale Rate on the basis of Sale Rate then this option should not be used again, otherwise will further change rates.

If want to Changed Sale Rate on the basis of MRP then select MRP in mentioned columns

Define desired values according to Taxes, Click “Yes” on Update



Change Product Rates TaxType Wise

Tax 0%	SG0	Change:	Sale Rate	=	Sale Rate	+	Sale Rate	*	0	/100	<input type="checkbox"/> Update?
Tax 5%	SG1	Change:	Sale Rate	=	Sale Rate	+	Sale Rate	*	0	/100	<input checked="" type="checkbox"/> Update?
Tax 12%	SG2	Change:	Sale Rate	=	Sale Rate	+	Sale Rate	*	0	/100	<input checked="" type="checkbox"/> Update?
Tax 18%	SG3	Change:	Sale Rate	=	Sale Rate	+	Sale Rate	*	0	/100	<input checked="" type="checkbox"/> Update?
Tax 28%	SG4	Change:	Sale Rate	=	Sale Rate	+	Sale Rate	*	0	/100	<input checked="" type="checkbox"/> Update?

Change In or: **LTE & LTI Products**

Change Rates In or Batches Having Stock > 0

Pvt. Ltd.
 Plot, Jalpur-1 INDIA
 Tel: +918298577600
 Tel: +919829577601
 Fax: 0141 2571882
 www.swindia.com



Change Product Rates TaxType Wise

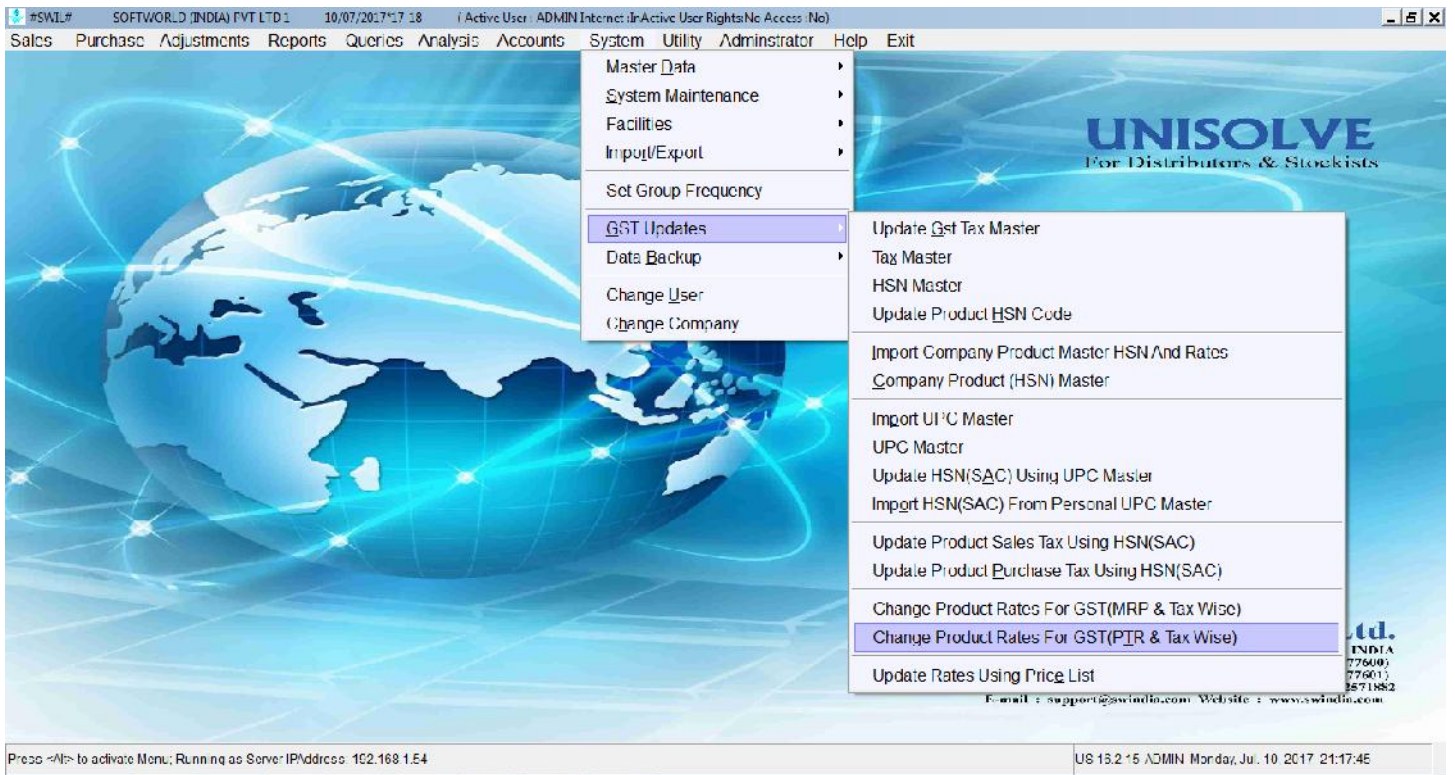
Tax 0%	SG0	Change:	Sale Rate	=	M.R.P	+	M.R.P	*	0	/100	<input type="checkbox"/> Update?
Tax 5%	SG1	Change:	Sale Rate	=	M.R.P	+	M.R.P	*	0	/100	<input checked="" type="checkbox"/> Update?
Tax 12%	SG2	Change:	Sale Rate	=	M.R.P	+	M.R.P	*	0	/100	<input checked="" type="checkbox"/> Update?
Tax 18%	SG3	Change:	Sale Rate	=	M.R.P	+	M.R.P	*	0	/100	<input checked="" type="checkbox"/> Update?
Tax 28%	SG4	Change:	Sale Rate	=	M.R.P	+	M.R.P	*	0	/100	<input checked="" type="checkbox"/> Update?

Change In or: **LTE & LTI Products**

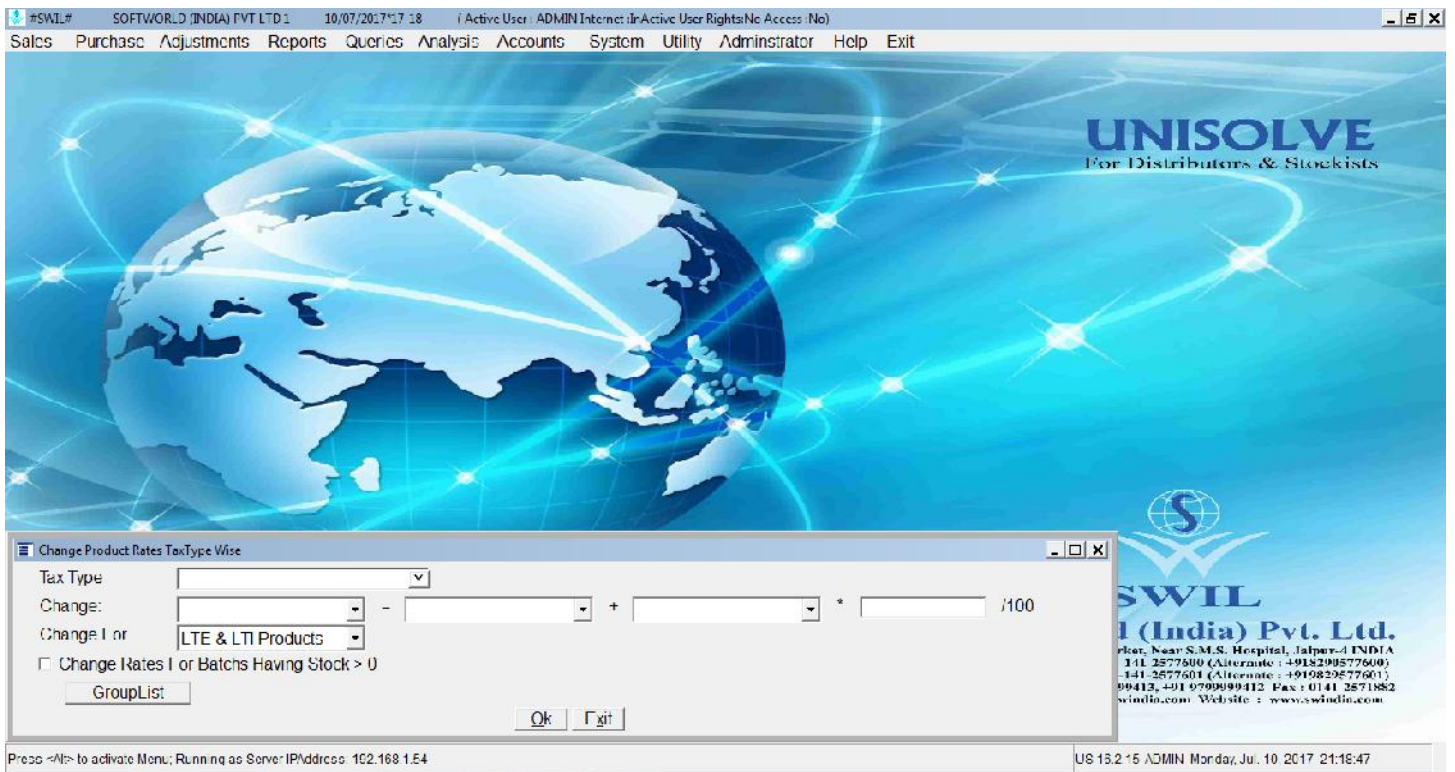
Change Rates In or Batches Having Stock > 0

Pvt. Ltd.
 Plot, Jalpur-1 INDIA
 Tel: +918298577600
 Tel: +919829577601
 Fax: 0141 2571882
 www.swindia.com

5. (b) GST Updates Change Product Rates for GST (Single Tax type wise)



Again select tax and apply desired formula for changing rates.



6. Start GST Billing

You may start GST Billing now, after making invoice or Challan, click on Alt+P on transaction browser table, press delete button on format list opened, select desired default print format and print. (SGST+CGST or IGST).

The screenshot shows a software application window titled 'Cash Invoice Invoice (Shift F5) (W)SALES INVOICE (CASH INVOICE)'. The main window displays a table with the following data:

Inv. No	Series	Date	Code	Name	Place	Net Amount	CASH Recd	Due Date	Sal
4397	C	30/06/17	S0014	SHREE PHARMA SALES	DAWA BAZAR JBP	352.00	352.00	/ /	

Below the main window, a 'Cash Invoice - Printing' dialog box is open. It contains the following fields and options:

- Format: w
- Stationary: Stationary
- Pre-Printed: Pre-Printed
- No. of Copies: 1
- Inv. No. From: Description(Alt+E For Edit,Alt+C For Copy)
- Page Width: WH./D/ST.SG--CGST GOVT. DOTMATRIX WIN (Selected)
- Print Cost of F:
- Sales Man: Wholesale
- Date From: WHOLESALE
- Print Already P:

The 'Output to' section is set to 'Screen'. Other options include 'Printer(Alt-P)', 'File', and 'PDF'. Buttons for 'Options(F2)', 'Setup', 'OK(Alt-O)', and 'Exit(Alt-x)' are visible at the bottom of the dialog box.

Thanking & Assuring the Best Possible Services at all Times

SWIL Team